

### Touch Screen Constant-Temperature Incubator



Double-layer Door (D type)

Glass Viewing Window Door (G type)

**Standard Accessories:**

**Optional Accessories:**



Test port



Base stand



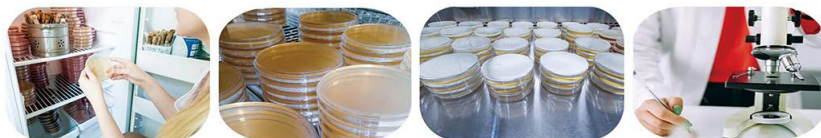
Footmaster Caster



UV lamp

**Applications:**

This product is used for storing bacteria, biological culture and other scientific research. Widely used in scientific research, colleges and universities, biology, agriculture and various laboratories, etc.



**Features:**

- \* Large LCD touch screen.
- \* D type: with inner glass door.
- G type: with viewing window.
- \* Microprocessor controller.
- \* Stainless steel chamber.

**Safety Functions:**

- \* Over temperature alarm.
- \* Independent limit temperature alarm system.
- \* Leakage current and over-voltage protector.

**Technical Parameters:**

Model	BJPX-H54BK(D/G)	BJPX-H88BK(D/G)	BJPX-H160BK(D/G)	BJPX-H200BK(G)	BJPX-H270BK(G)
Capacity	54L	88L	160L	200L	270L
Temperature Control Method	PT100				
Temperature Range	RT+5~85°C				
Temperature Stability	±0.5°C (at 37°C)				
Temperature Uniformity	±1°C (at 37°C)				
Ambient Temperature	5~30°C, recommend 25°C±2°C				
Timing Range	0~99.9h				
Shelves	2pcs/adjustable				
Power Consumption	345W		495W	645W	
Power Supply	AC220V±10%, 50/60Hz(Standard); AC110±10%, 60Hz(Optional)				
Internal Size(W*D*H)mm	395*346*395	500*364*500	558*518*600	598*638*548	665*720*600
External Size(W*D*H)mm	D type: 536*588*681	D type: 650*573*793	D type: 718*732*890		791*859*912
	G type: 522*626*587	G type: 627*621*692	G type: 685*779*790		
Package Size(W*D*H)mm	D type: 670*690*850	D type: 755*660*955	D type: 825*830*1060		830*895*990
	G type: 630*715*750	G type: 835*710*850	G type: 790*865*960		
Gross Weight(kg)	D type: 51	D type: 72	D type: 100		102
	G type: 44	G type: 58.5	G type: 82		
				89	
					G type: 115